

EXHIBIT A

FIELD NOTES

Changes in Election Precincts, Commissioners Precincts and Justice Precincts

In Clifton

This area has been moved from Commissioner Precinct Three to Pct. Four

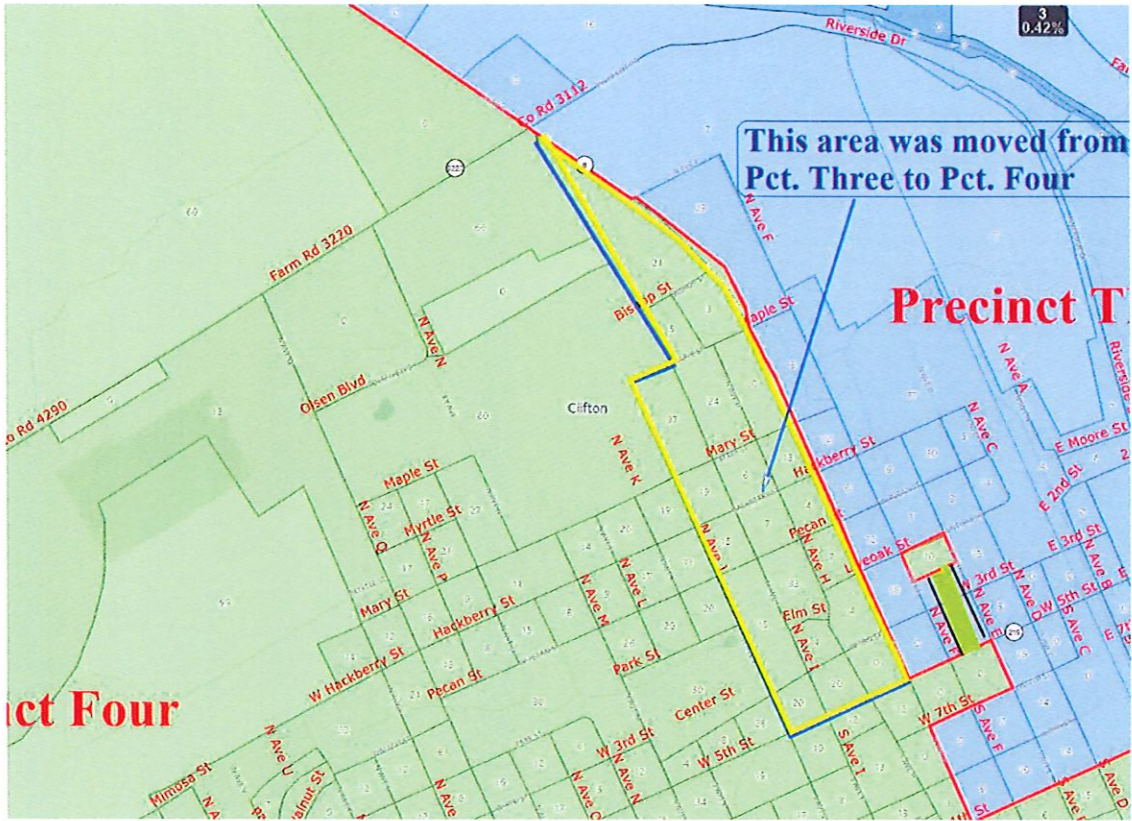
Commencing at a point at the intersection of Hwy 6 and West 5th Street in Clifton,
Thence in a south-westerly direction on West 5th Street to its intersection with Avenue J,
Thence in a north-westerly direction on Avenue J to its intersection with Maple Street,
Thence in a north-easterly direction on Maple Street to its intersection with Avenue I (i),
Thence in a north-westerly direction on Avenue I (i) to its intersection with Hwy 6,
Thence south on Hwy 6 West 5th Street to its intersection with West 5th Street, the point of beginning.

In Meridian

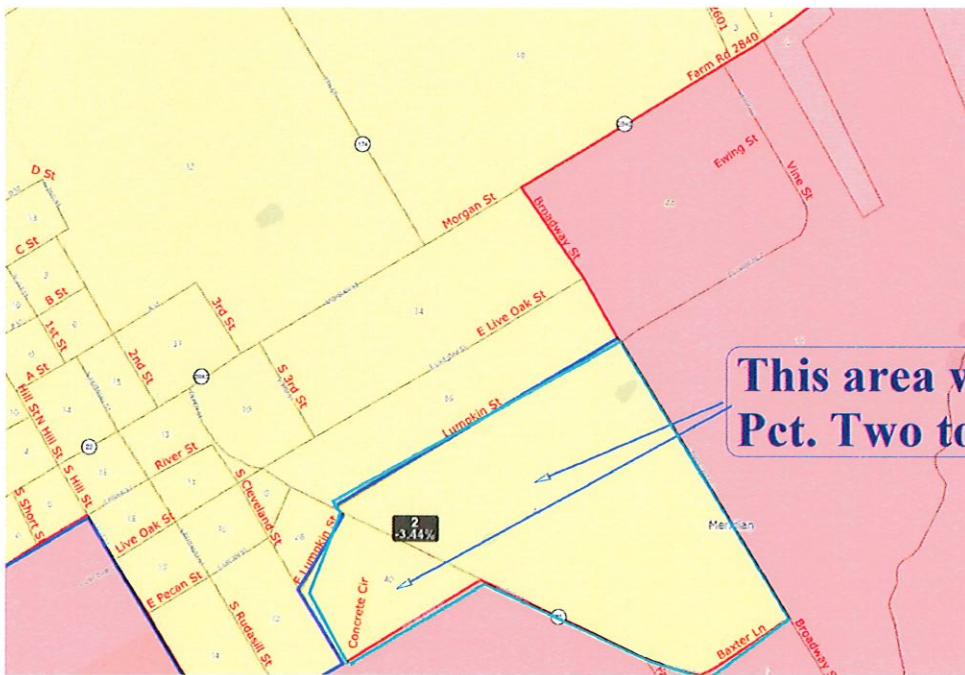
This area has been moved from Commissioner Precinct Four to Pct. Two.

Commencing at a point where Lumpkin Street intersects with Broadway Street,
Thence in a south-easterly direction on Broadway St. to its intersection Baxter Lane,
Thence in a south-westerly direction on Baxter Lane to its intersection with Depot Street,
Thence in a generally north-westerly direction on Depot Street to its intersection with Concrete Street,
Thence in a south-westerly direction on Concrete Street to its intersection with South Cleveland Street,
Thence in a north-westerly direction on S. Cleveland St. to its intersection with East Lumpkin Street,
Thence in a north-easterly direction on Lumpkin St. to its intersection with Depot St.,
Thence in a north-westerly direction on Depot St. to its intersection with Lumpkin St.,
Thence in a north-easterly direction on Lumpkin St. to its intersection with Broadway St., the point of beginning.

EXHIBIT B



Clifton, Bosque County Texas



Meridian, Bosque County, Texas